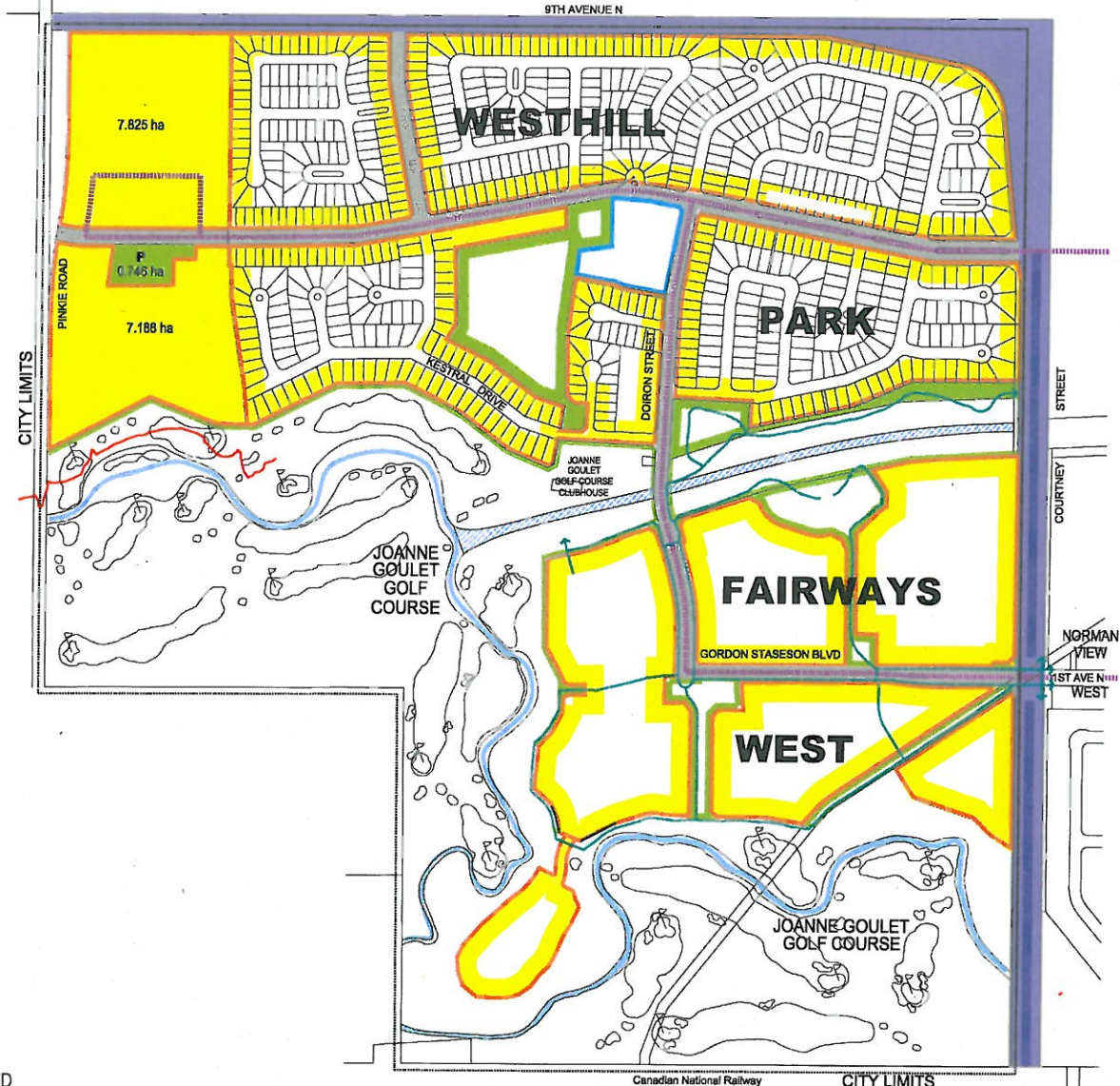


WESTHILL PARK CONCEPT PLAN (WESTHILL PARK PHASE IV EXTENSION)



LEGEND

1. LAND USE

EXISTING	PROPOSED	
		R Low Density (< 25 units / hectare)
		P Open Space / Golf Course
		I Institutional

2. LINEAR & STRUCTURAL ELEMENTS

- Arterial Roads
- Future Arterial Roads
- Collector Roads
- Neighbourhood Boundary
- Transit Route
- Possible Transit Stops
- Pedestrian Linkages
- North Storm Channel
- Wascana Creek
- Floodway Boundaries

3. DEMOGRAPHIC INFORMATION

a) Projected Population

Existing Westhill Park	2,337
Existing Fairways West	1,451
Proposed Westhill Park Ph.IV	837
Total	4,625

b) Number of Dwelling Units

Existing Westhill Park	764
Existing Fairways West	518
Proposed Westhill Park Ph.IV	299
Total	1,581

c) Projected School Population (Westhill Park Ph.IV)

Elementary	179
High School	60
Total	239



Client / Project
HARVARD DEVELOPMENTS INC.
WESTHILL PARK
2010 CONCEPT PLAN REVISION
 Figure No.
FIGURE 1
 Title
CONCEPT PLAN

PROPOSED WESTHILL PARK PHASE IV EXTENSION BACKGROUND PLAN



LEGEND
 --- CONCEPT PLAN BOUNDARY

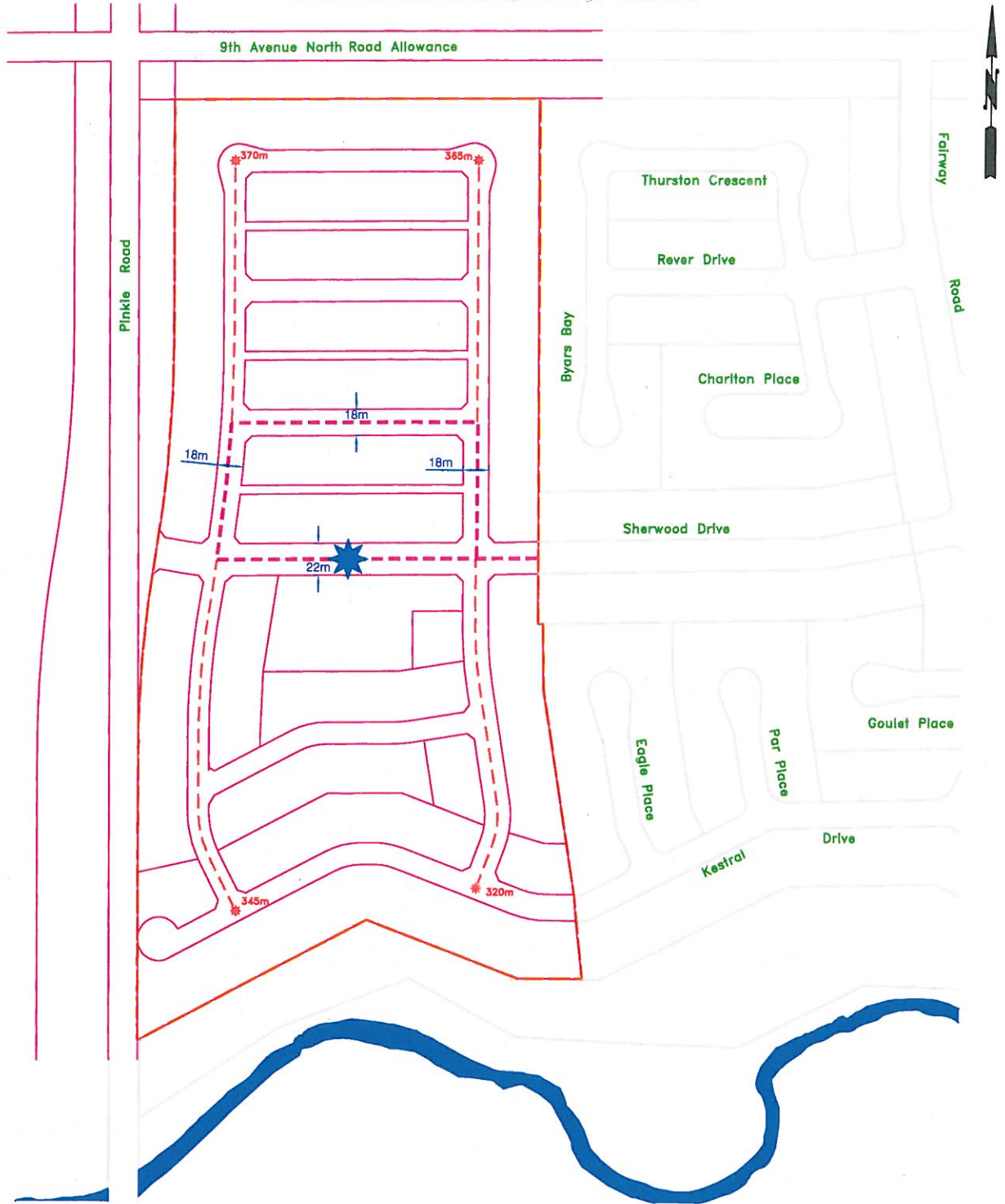


438 VICTORIA AVENUE EAST, SUITE 200
 REGINA, SASKATCHEWAN, CANADA S4N 0Y7
 TELEPHONE: (306) 695-1000
 FAC: (306) 695-9113

DATE APPROVED BY CITY COUNCIL: UNDER REVIEW

Client/Project
 HARVARD DEVELOPMENTS INC.
 WESTHILL PARK
 2010 CONCEPT PLAN REVISION
 Figure No.
 FIGURE 2
 Title
 POSSIBLE ROAD DESIGN

PROPOSED WESTHILL PARK PHASE IV EXTENSION BACKGROUND PLAN



LEGEND

- - - FUTURE TRANSIT ROUTE
- CONCEPT PLAN BOUNDARY
- * 200m SELECTED POINT AND DISTANCE IN METERS FROM TRANSIT ROUTE
- ★ PROPOSED TRANSIT STOPS



430 VICTORIA AVENUE EAST, SUITE 200
 REGINA, SASKATCHEWAN, CANADA S4N 0Y7
 TELEPHONE: (306) 685-1000
 FAX: (306) 685-0113

DATE APPROVED BY CITY COUNCIL: UNDER REVIEW

Client/Project
 HARVARD DEVELOPMENTS INC.
 WESTHILL PARK
 2010 CONCEPT PLAN REVISION
 Figure No.
 FIGURE 3
 Title
 TRANSIT PLAN